

MEMO_MINUTES

Paderborn, 19/05/2009

Contact: rene.berhorst@malighting.com

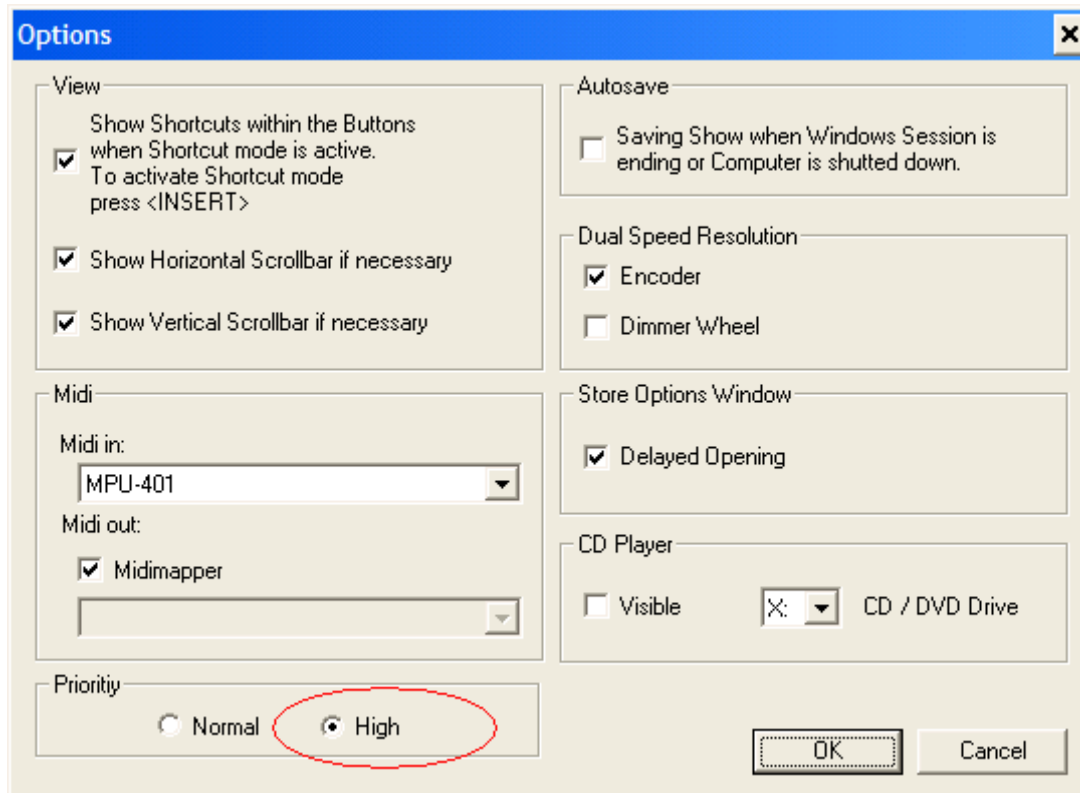
Connecting grandMA to ESP Vision

Configuring grandMA

1. Power up the grandMA console, or run grandMA onPC (grandMA Offline) software.
2. Click the Tools button. The Tools Menu window appears.
3. Click the MA Network button.
 - Enter the interface for the MA Net.
 - Enter a number between 1 and 31 in the MA Session ID field.
 - Please remember this number, because you will need it when you set up the grandMA – ESP Vision driver.
 - The session style must be Full Tracking or Multiuser.
 - Hit the Button 'Start New Session' to start a MA Session.



Tip: If you are running grandMA onPC and ESP Vision on the same computer you should change to program priority in the grandMA Options Dialog to the level 'High', to allow more comfortably working.

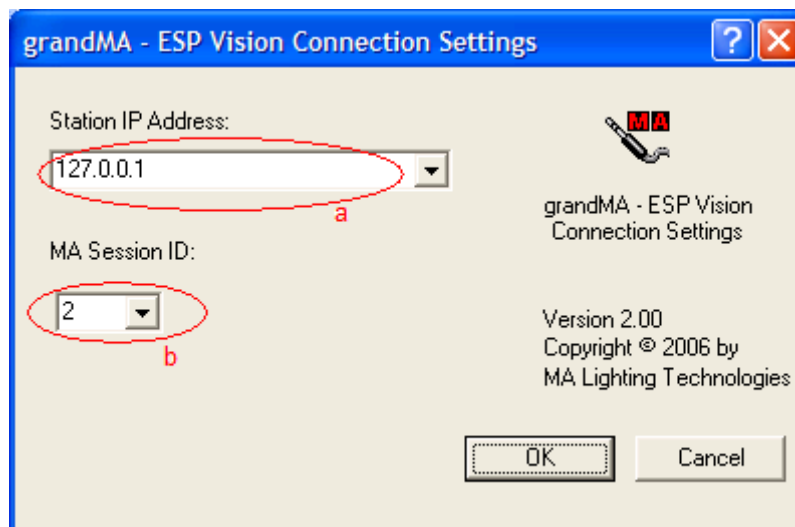


Installing and Configuring the grandMA ESP Vision Driver

Execute the setup program gmaESPVisionxxxxsetup.exe and follow the on-screen instructions. Once installation is complete, you will notice an addition to your Control Panels, 'grandMA – ESP Vision Driver'.

1. Open the Control Panel Dialog.

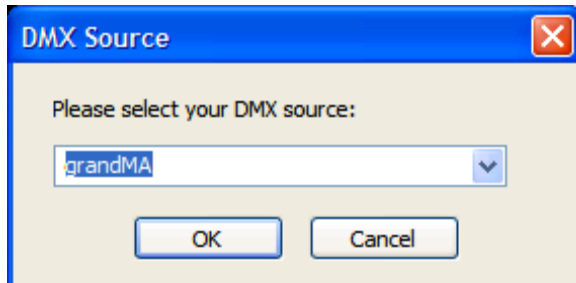
- Enter the interface for the MA Net (Step 3a above). If you use ESP Vision and grandMA onPC (grandMA Offline) on the same computer you can use the loopback address 127.0.0.1 for connecting. In any other case the selected interface address must be in the same subnet as the grandMA console or grandMA onPC (grandMA Offline).
- Select the MA Session ID. It must be the same as in Step 3b above.



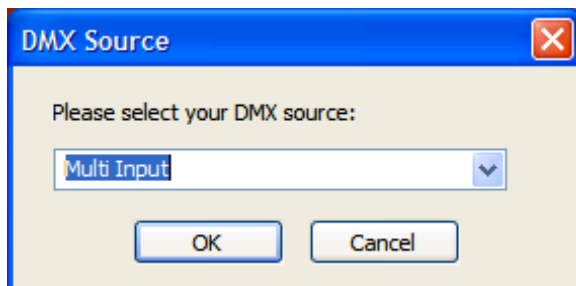
2. Click OK.

Connecting ESP Vision to grandMA

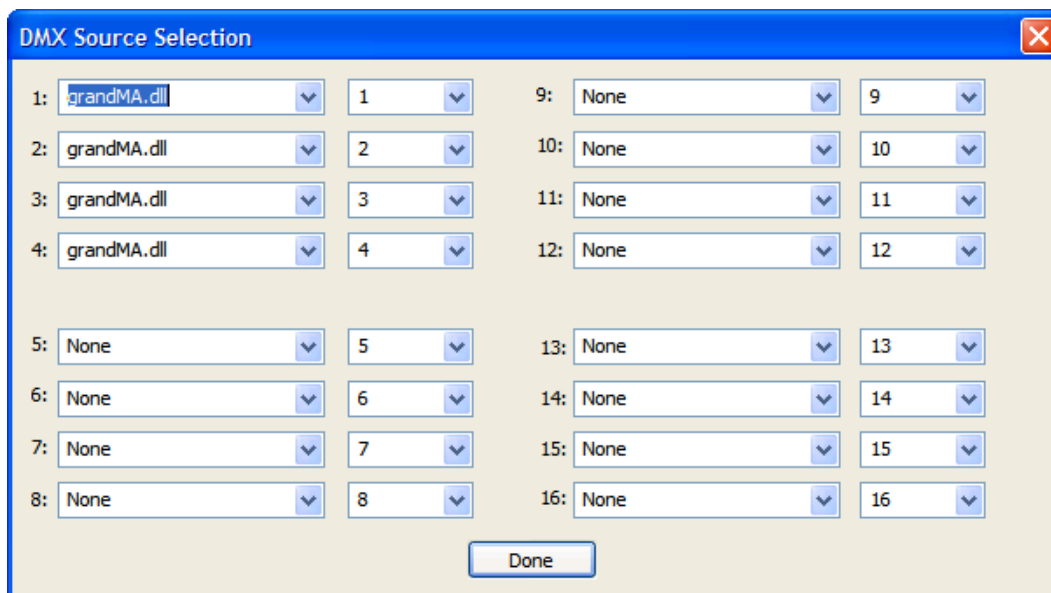
Select 'grandMA' as DMX Source while starting ESP Vision



or select 'Multi Input' as DMX Source while starting ESP Vision and then



select grandMA.dll in the upcoming Dialog Box.



Patch the Fixtures in ESP Vision, ensuring that the patch matches those in the corresponding grandMA show.

Enjoy programming!

Your MA-Team