

# MEMO\_MINUTES

Paderborn, 19/05/2009

Contact: rene.berhorst@malighting.com

## Connecting the grandMA to WYSIWYG

### Configuring the grandMA

1. Power up the grandMA console, or run the grandMA onPC software.
2. Click the Tools button. The Tools Menu window appears.
3. Click the DMX & NSP Configuration button. In the WYSIWYG Config window, ensure the following:
  - The WYSIWYG Output & Autofocus button reads 'Enabled'.
  - A number between 1 and 31 is shown as the Connection ID (MA Session ID). Please remember this number, because you will need it when you set up the connection in WYSIWYG driver. If you are running multiple consoles, they must each have a unique Connection ID.
  - There must be an active MA Session in order to transmit DMX data to WYSIWYG.



4. Once all the settings are confirmed, hit the Save button, and then the X next to it, to close the DMX Configuration window.
5. Back in the Tools Menu window, click the MA Network button.
  - Enter one of the following in the Station IP Address field. Please remember what you enter here: you will need this IP address in order to configure the grandMA WYSIWYG driver.
  - If WYSIWYG and grandMA onPC are running on the same computer, you must enter the same IP address as in step 2 of the driver configuration (below), e.g. 127.0.0.1.
  - In any other case (i.e. grandMA onPC is running on a different computer on the network than WYSIWYG, or you are using an actual grandMA console connected to the network the WYSIWYG computer is on), the IP address must be in the same subnet as the computer with WYSIWYG. For example, if your WYSIWYG computer's IP address is 192.168.1.20, the IP address 192.168.1.21 should work for your console, as long as no other device on your network is using that same address.
  - A number between 1 and 31 is entered in the MA Session ID field. The MA Session ID is equivalent to the WYSIWYG Connection ID. Please remember this number, because you will need it when you set up the connection in WYSIWYG. If you are running multiple consoles, they must each have a unique Connection ID.
  - The session style must be Full Tracking or Multiuser.
  - Hit the Button 'Start New Session' to start a MA session.



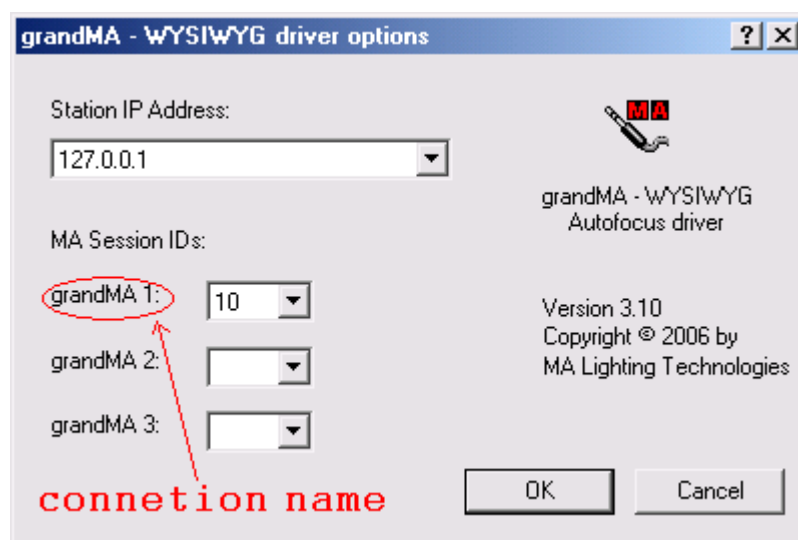
6. Close the MA Network Connections window by clicking on the X in the upper right hand corner, and then close the Tools Menu window the same way.
7. Patch the console, ensuring that the patch matches the WYSIWYG show file. You do not need to assign position information to fixtures.

## Installing and Configuring the grandMA WYSIWYG Driver

The grandMA WYSIWYG driver must be installed in order to establish a connection between the grandMA console and WYSIWYG. Installation is straight-forward: simply double-click on gmaWygXXXXsetup.exe and follow the on-screen instructions. Once installation is complete, you will notice an addition to your Control Panels, "grandMA – WYSIWYG Driver".

Steps to configuring the driver:

1. Double-click on the grandMA – WYSIWYG Driver icon in your Control Panel.
2. Enter the same Station IP Address that you entered for the console in step 5 of the console configuration (above).



3. Enter the MA Session ID (which you set in step 3b, above) to the corresponding connection name and remember the connection name, because you will need it when you set up the connection in WYSIWYG. The numbers must match, or a connection cannot be established.
4. Click OK.

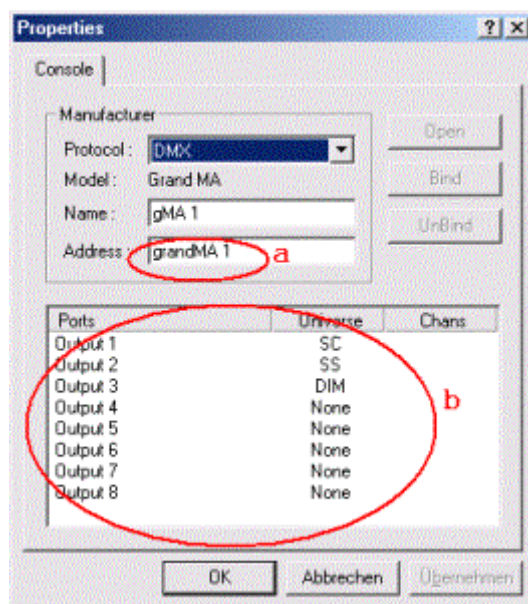
## Configuring WYSIWYG and Connecting to the Console

Before attempting the connection described below, please ensure the following:

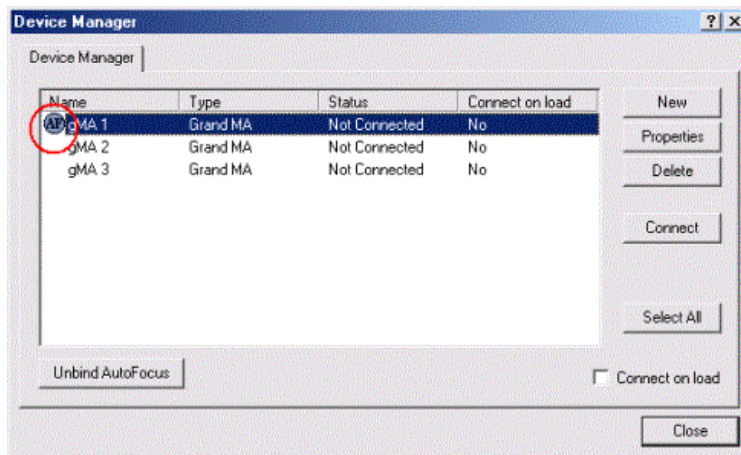
1. The grandMA onPC application is running, and is configured as described at the beginning of this document. If you are using a physical grandMA console, please make sure that it is powered up and connected to the network to which the WYSIWYG computer connected. It should also be mentioned here that when patching fixtures on the grandMA, you do not need to assign position information (i.e. X, Y, Z coordinates) to them. (Of course, you still have the option to do so if you wish.)
2. The proper patch universes are defined in your WYSIWYG show, and that your fixtures are patched. In addition, all your fixtures have the proper Spot Numbers assigned, matching what you have in the console. (Spot Number in WYG = FixtureID on the grandMA)

Follow these steps to connect to the grandMA:

1. Load the show file and switch to LIVE Mode.
2. Go to the Live menu, and select Device Manager.
3. Click the New button.
4. Expand the Consoles tree (if it is not already expanded), then the MA Lighting tree and click on the grandMA to select it. Click the Insert button. The grandMA is now listed in the Device Manager.
5. With the Grand MA selected, click the Properties button. The console's Properties window appears. Ensure the following:
  - The console's Connection Name (above) is entered in the Address field.
  - The console's outputs are bound to the appropriate WYSIWYG Patch Universes. (Patch A on the console is Output 1 in WYG, Patch B on the console is Output 2 in WYG, and so on.)

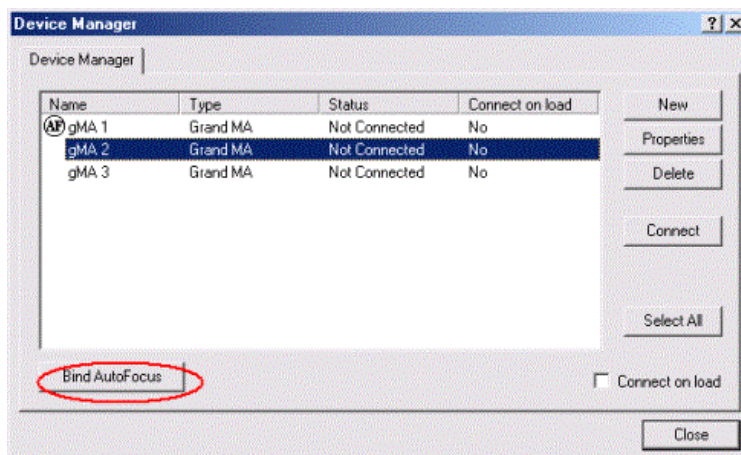


6. Click OK.
7. Back in the Device Manager window, please ensure that the AF icon appears next to the console. This icon tells you which console AutoFocus is bound to. Please note that AutoFocus may only be bound to one console at a time.



If you are using multiple consoles for your show, follow these steps in order to switch the AutoFocus binding between them:

- Select the console with AutoFocus bound to it.
- Click the Unbind AutoFocus button at the bottom of the window.
- Select the next console.
- Click the Bind AutoFocus button at the bottom of the window.
- The AF icon will appear next to the selected console, as before.



- Click the Connect button. The Status of the selected console changes to 'Connected'.
- Click the Close button in the bottom right hand corner.
- Turning fixtures on from the console should display their beams in WYSIWYG's LIVE Mode.
- In order to use AutoFocus, in LIVE Mode, go to the Live menu, and select the Designer Tools you want/need to use.
- Select fixtures in WYSIWYG (you must create Concepts in order to select fixtures in full Shaded View), and click the Full button on the Intensity Tool: you should now see their beams in WYG. Clicking and dragging inside the trackpad in the Focus Tool should move the beams around (if you are using moving head/mirror fixtures). Colour selection only works for fixtures that support colour mixing. The Iris Tool only affects fixtures that have an iris.

Happy programming!

Your MA-Team